



MILL INSIGHTS

Mill Insights with web monitoring systems

How Procemex ProClean Pinhole camera images looked after six months from installation

I have been working in the paper industry for several years in Indonesia. During this time, I have traveled across different areas in Indonesia and visited dozens of paper mills. It has been very exciting to see with my own eyes the extreme conditions, where the paper web monitoring cameras must perform optimally, to provide accurate images to mill operators, enabling them to enhance production line efficiency and recognize paper web defects accurately and on time.

Paper mills today require, that web monitoring cameras provide sharp high-resolution images at the highest machine speeds and requirements.

As many of the web monitoring cameras are located in the forming and press section, it is critical to keep cameras and lights clean in harsh environment to deliver excellent images for improved troubleshooting and efficiency.

I thought it would be interesting to take before and after images with Procemex ProClean Pinhole Cameras, and see, how they perform and maintain the image quality in harsh paper mill conditions, six months after installation.

The installation consisted of multiple Procemex ProClean pinhole cameras that monitored different phases of the paper production. The pictures taken present really well, why so many mill operators insist on using Procemex ProClean Pinhole cameras instead of the traditional web monitoring cameras.

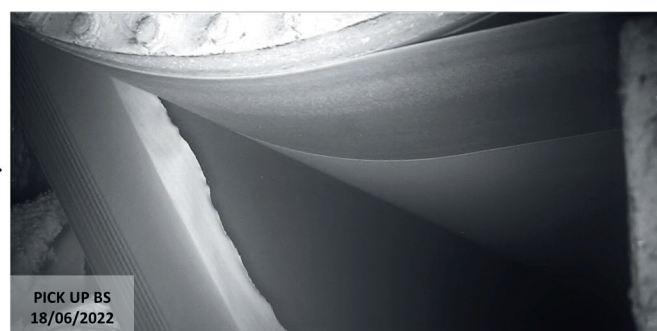
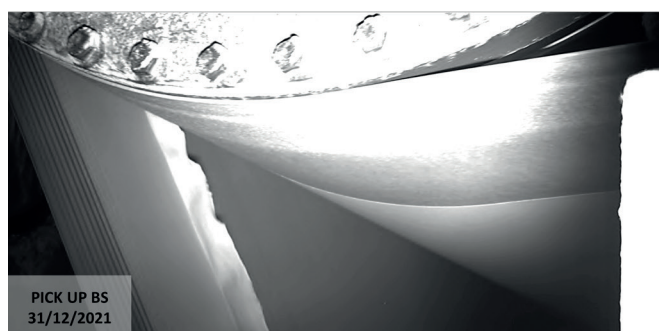
The picture on the left column shows the camera image taken on the installation day, and the picture on the right shows the image, that was taken with the same pinhole camera, six months after the installation date.

When looking at these images, I am not surprised, why so many paper mills in Indonesia have shifted away from using traditional cameras to Procemex ProClean Pinhole cameras.



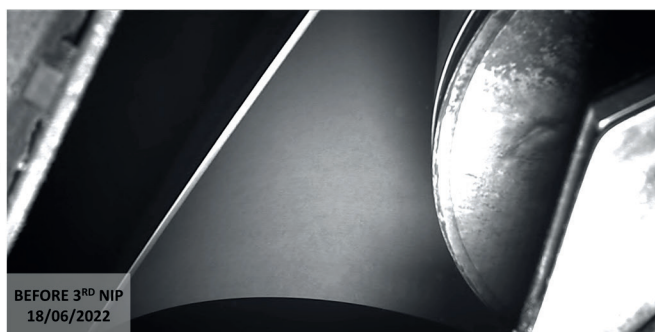
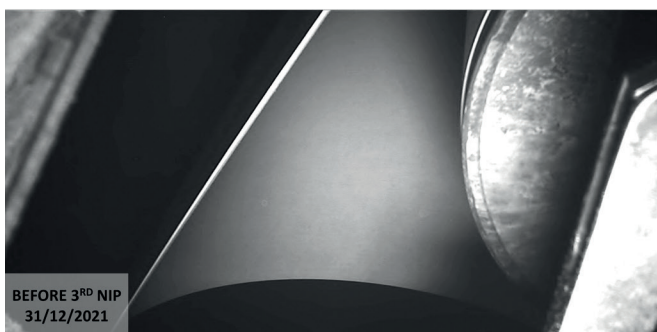
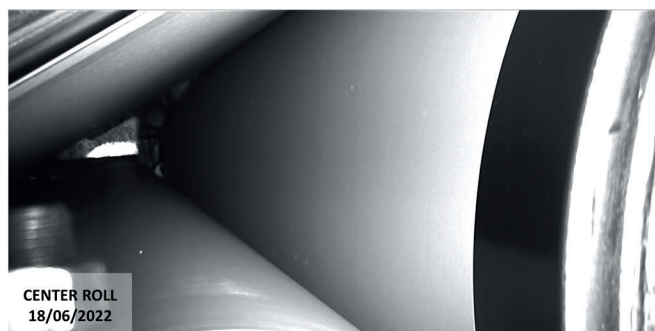
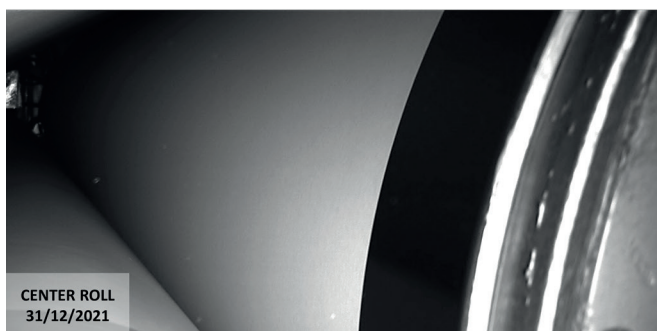
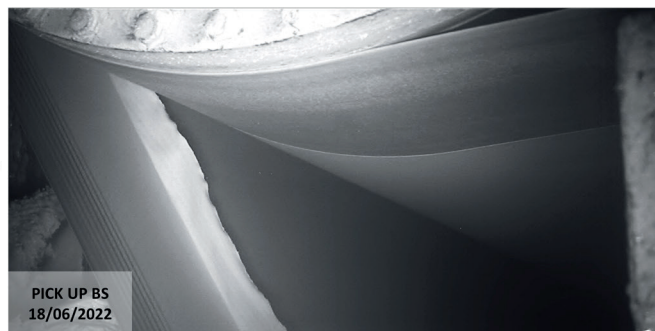
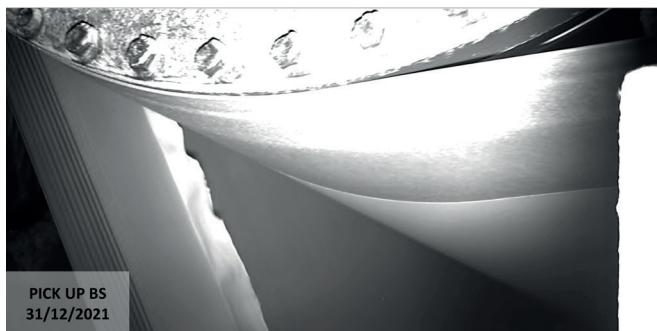
BEFORE

AFTER 6 MONTHS



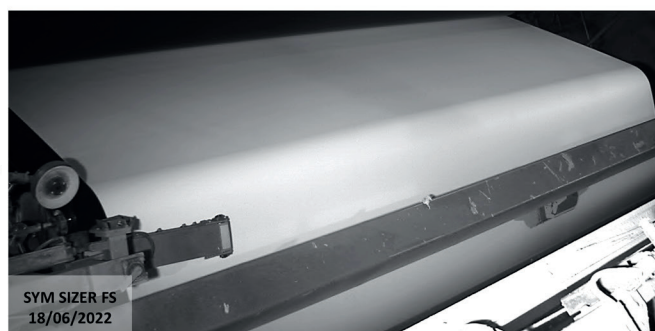
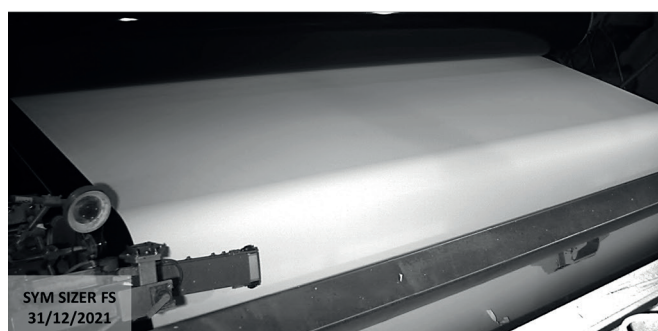
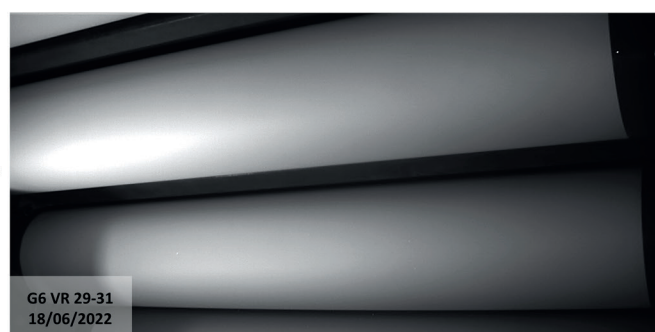
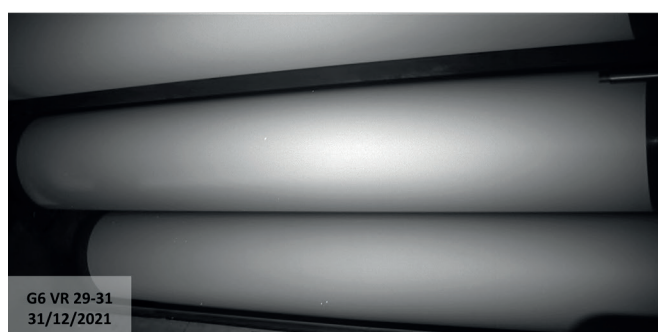
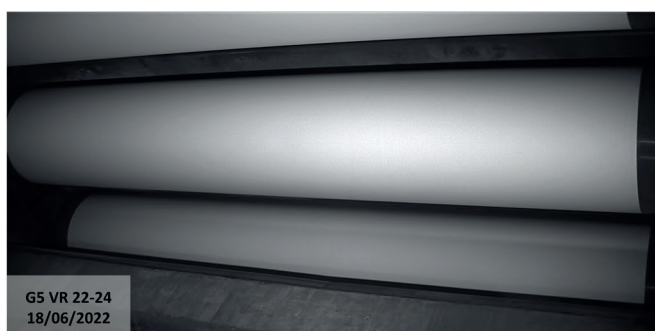
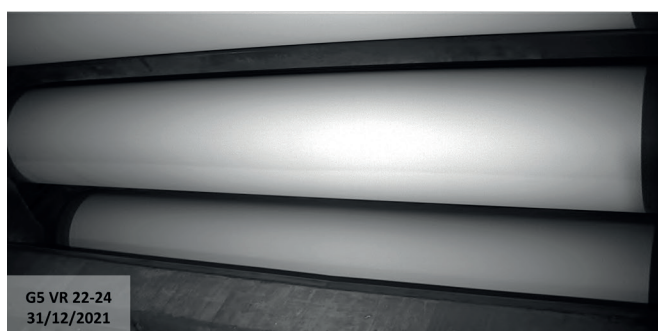
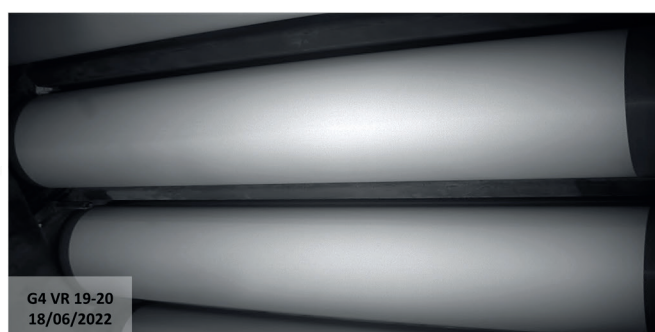
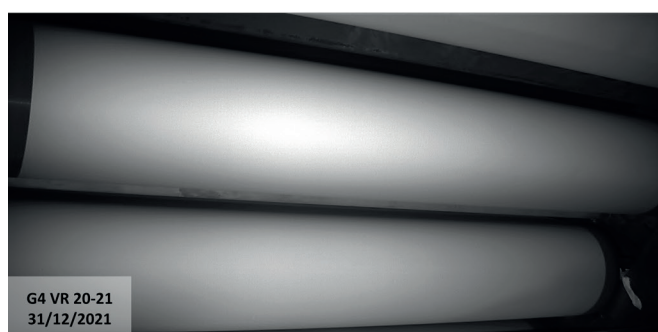
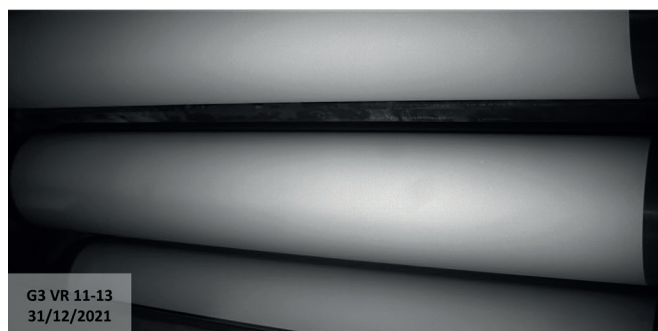
BEFORE

AFTER 6 MONTHS



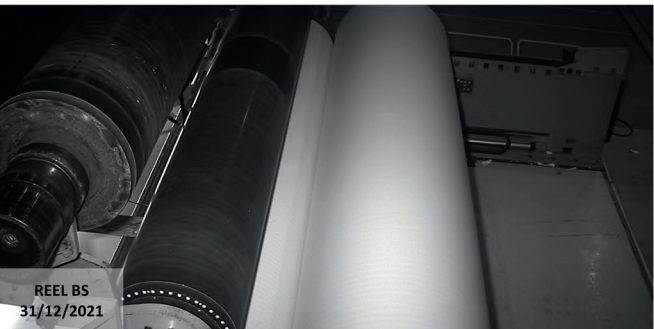
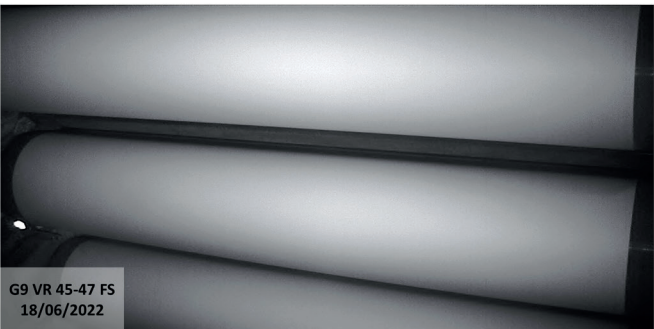
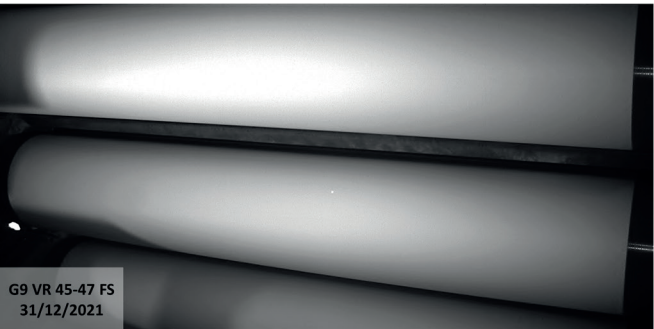
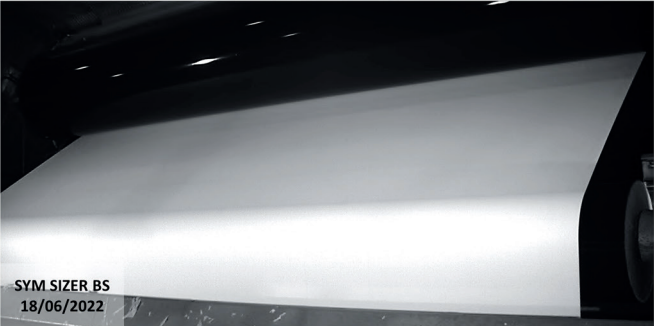
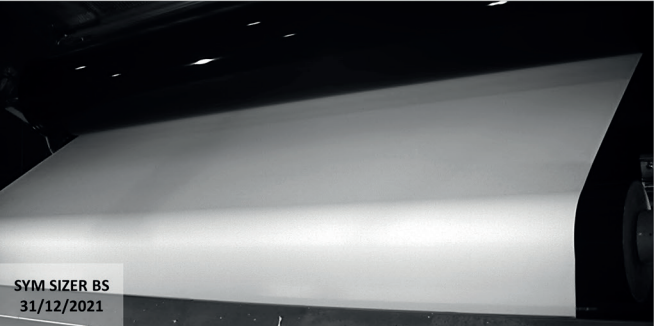
BEFORE

AFTER 6 MONTHS



BEFORE

AFTER 6 MONTHS



PROCEMEX

About us

Procemex is a global leader in integrated web monitoring and web inspection solutions in pulp, paper & printing industry. Procemex has specialized in designing and manufacturing smart camera and lighting solutions for web monitoring and web inspection.

Procemex develops, designs and delivers the fastest and the most accurate smart camera-based solutions for paper manufacturers and printers worldwide. Web monitoring and Web Inspection for eliminating web breaks or minimizing downtime in processes is Procemex's core business that lies in mastering optical imaging and image processing, starting from the very beginning of the process: camera sensors.

Author

Dika Akilla, Service Engineer of NVG (Procemex exclusive partner in South East Asia and China), visiting Procemex Finland having a look on the finalization of the web monitoring and inspection system before it is shipped to Indonesia.

